

1) Ultrasonic transducer, 2) Display and control panel



Basic features

Application	Distance measurement
Approval/Conformity	cULus CE WEEE UKCA
Operating mode	Analog measurement (output curve)
Series	Q62K1

Display/Operation

Display	2x tricoloured - LED
----------------	----------------------

Electrical connection

Connection	M12x1-Male, 5-pin
Polarity reversal protected	yes
Short-circuit protection	yes

Electrical data

Current draw max.	60 mA
Load resistance RL min. (Analog V)	100 kOhm at UB > 15 V
Operating voltage Ub	9...30 VDC
Rated operating voltage Ue DC	24 V
Synchronization	internal, max. 10 sensors
Ultrasonic Frequency	120 kHz

Environmental conditions

Ambient temperature	-25...70 °C
IP rating	IP67
Storage temperature	-40...85 °C

Functional safety

MTTF (40 °C)	389 a
---------------------	-------

Ultrasonic Sensors
BUS Q62K1-XC-35/340-S92K
Order Code: BUS006J



Interface

Analog output	Analog, voltage/Analog, current 0...10 V/4...20 mA
Output characteristic	linear rising/falling

Mechanical data

Dimension	62.2 x 62.2 x 32.7 mm
Mounting part	4-hole screw mount Screws M8

Material

Housing material	PBT
Material sensing surface	PU foam/Epoxy resin/Glass

Range/Distance

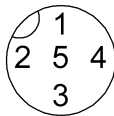
Measuring range	350...5000 mm
Rated operating distance Sn	3400 mm
Repeat accuracy	± 0.15 %FS
Resolution	≤ 0.180 mm

Remarks

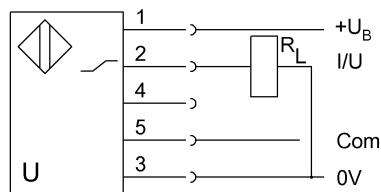
The sensor is functional again after the overload has been eliminated.
 Reference object for Sn: tube ø27mm. Max. range refers to the aligned plate.
 Do not press key using a pointed tool.
 Order accessories separately.
 For additional information, refer to user's guide.
 For more information about MTTF and B10d see MTTF / B10d Certificate

Indication of the MTTF- / B10d value does not represent a binding composition and/or life expectancy assurance; these are simply experiential values with no warranty implications. These declared values also do not extend the expiration period for defect claims or affect it in any way.

Connector Drawings



Wiring Diagrams



Technical Drawings

